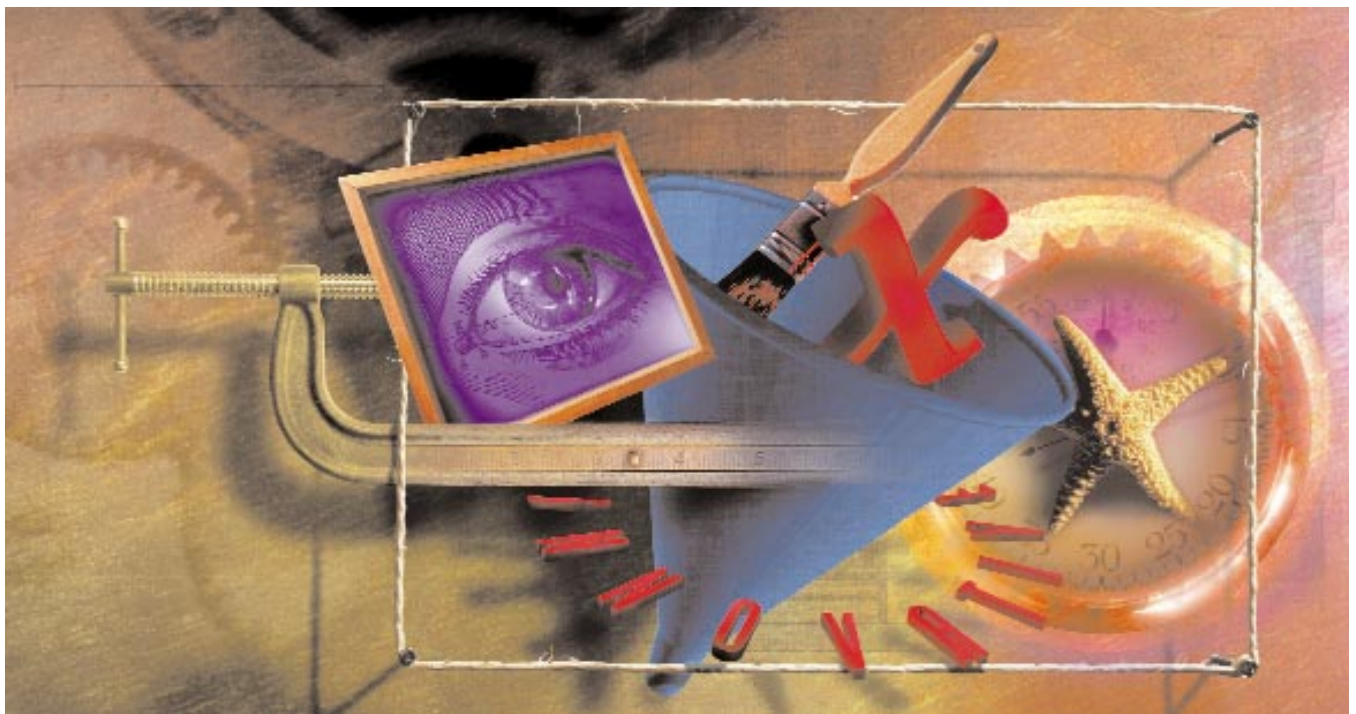


Made from Scratch

Creating Your Own Layer Effects in Photoshop 5.0



Add your own active ingredients to your next batch of Photoshop artwork.

What You Will Need:

- Adobe Photoshop 5.0 or later (demo available at www.adobe.com)
- Image "cone.psd" from the PEI Web site (www.peimag.com)

When Adobe released Photoshop 5.0, people got all excited about its new layer effects feature. But after a while, I started to notice too many "canned" effects appearing everywhere. You know, like when Kai's Power Tools were introduced, you'd

see an image in an ad and think, "Yep, they KPT'd it." So, let's put the cookie cutter effects aside for a moment and have some fun with some of my own recipes for home-baked, made-from-scratch layer effects.

I'll start you off with some basic tips about layer effects, then we'll use Photoshop's other features to build an interesting effect that updates right away when you change the text.

Drop Shadows

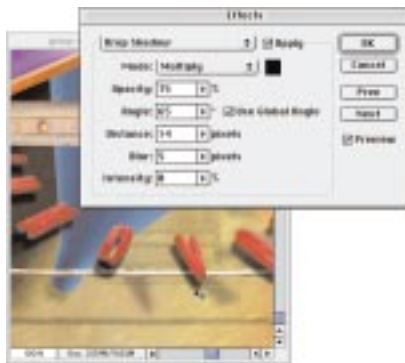
Let's start with a straightforward shadow effect. Open the image



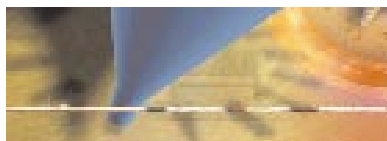
"cone.psd" from the PEI Web site.

Let's say you want to make it appear as if the text "innovative" is casting a shadow onto the string below it. To achieve this effect, click on the layer that contains the

curved text “innovative” and then choose Layer>Effects>Drop Shadow. While in the Drop Shadow dialog box, move the cursor over the image, dragging the shadow down and to the left; this will change the Angle and Distance settings in the Drop Shadow dialog box. If the shadow is overly dark, click on the Opacity setting and press the down arrow key several times to lower the setting (pressing shift-down arrow will lower the opacity in increments of 10). When the shadow looks good to you, click OK.



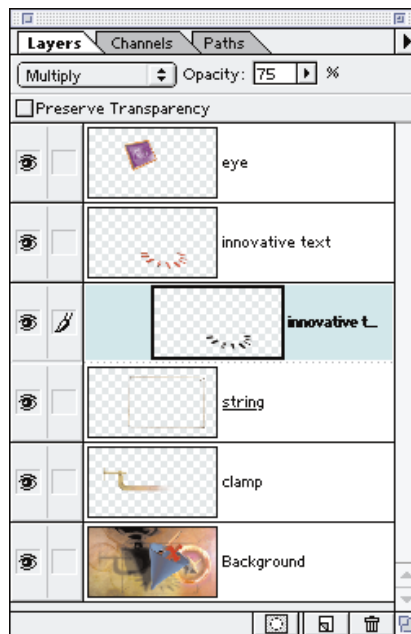
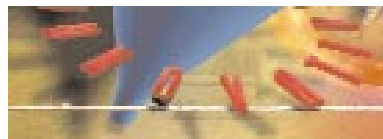
To make the shadow appear only where the string is, we'll need to create a clipping group. First, make sure the text layer is active and positioned directly above the layer that contains the string. Now choose Layer>Group with Previous. This should make all the information on the active layer appear only where there is information on the layer directly below it.



The only problem is that the text and shadow effect are on a single layer, so the text also appears only where the string is. To fix it so that only the shadow is used in the group, we'll need to place the shadow onto its own layer. Choose Layer>Effects>Create Layer.



This will place the shadow effect onto its own layer as if you had created the shadow manually. But both the text and shadow layers are still grouped to the string. To make the text normal again, be sure the text layer is active and choose Ungroup from the Layer menu.



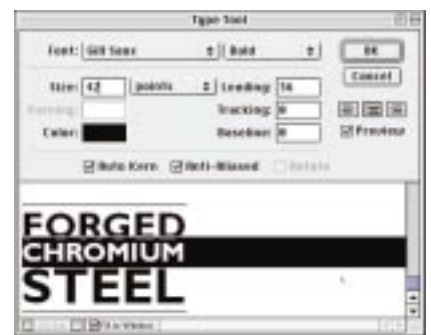
If you would like to try this effect again, you can use the same

file. This time create a shadow for the string that falls on only the clamp on the left side of the image.

Advanced Type Effect

Now let's see how clipping groups and layer effects can be used to create an advanced type effect. Create a new document just large enough to fill your screen (I'm using a 1,024x768-pixel RGB document). Next, click on the foreground color and pick an interesting hue for the background (I'm using 161R, 34G, 34B). Now fill in the current layer by choosing Edit>Fill, and set Contents to Foreground Color. Also, make sure the Preserve Transparency checkbox is turned off before clicking OK.

Now it's time to add text, so grab the Type tool and create some nice bold text. You can type anything you like. It doesn't matter what color you use, because it will be covered up later in the technique.



Next, add a drop shadow to the text by choosing Layer>Effects>Drop Shadow. This image is still pretty boring, so let's add pizzazz by applying a 3-D look.

Choose Layer>Effects>Bevel and Emboss, and experiment with the settings until the edge of the type has a little bit of dimension, or simply copy my settings from the dialog box on the next page.

When you create text in Photoshop

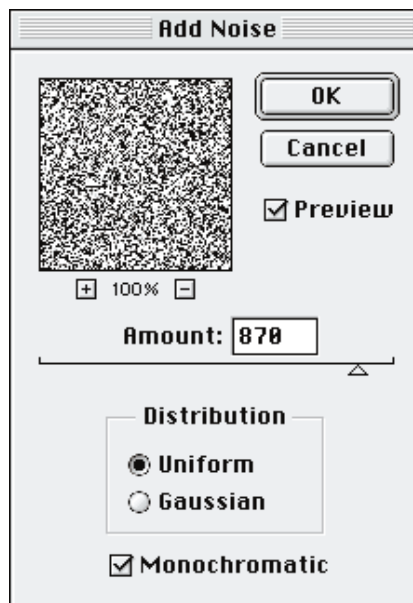


create a clipping group by choosing Layer>Group with Previous. You can also use a clipping group to make a photo appear only inside the shape of some text.

Now let's add a brushed metal look to the type. Start by creating a new layer on top of the gradient we just made, then choose Edit>Fill; but this time, change the Contents setting to White.

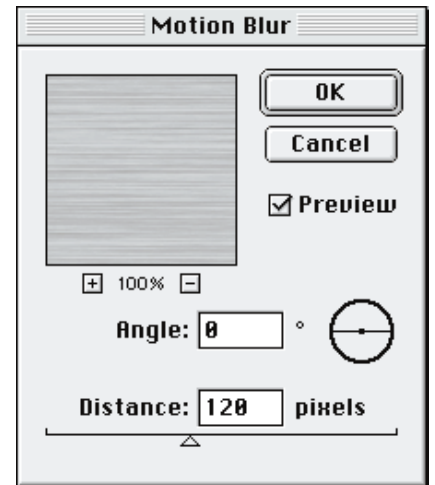


Next, add random information by choosing Filter>Noise>Add Noise. Be sure the Monochromatic

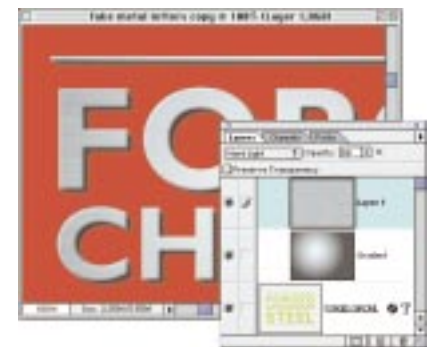


checkbox is on, turn the amount way up, and click OK.

Transform that noise into a brushed metal look by choosing Filter>Blur>Motion Blur. Set the angle to 0 and increase Distance until the height of the horizontal lines has little variation.



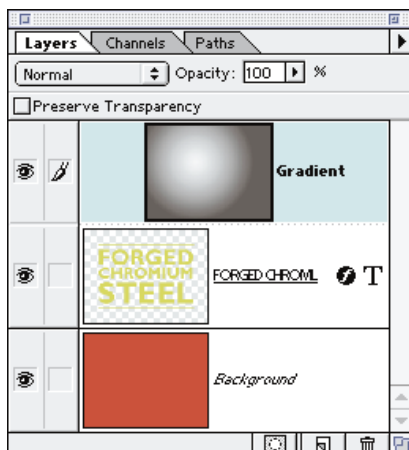
Now, let's integrate this into our text effect by choosing Layer>Group with Previous. To make the brushed metal combine with the gradient we created earlier, set the pop-up menu at the top of the Layers palette to Hard Light and then lower the opacity of the layer until you get a good blend of gradient and metal.



Now you can experiment with the angle of the light source by choosing Layer>Effects>Global Angle. When you change the angle setting, it will automatically change

5.0, you end up with an editable type layer. One of the limitations of this kind of layer is that the text must be a single color. We can circumvent that by creating a clipping group. Try this: Create a new layer above the type layer, then type "D" to reset the foreground and background colors to their defaults (black, white). Then type "X" to swap the foreground and background colors.

Now click-hold the mouse on the Gradient tool in the main toolbox (this will make additional gradient tools appear in a fly-out menu). Choose the second tool—Radial Gradient. Next, click in the middle of the document and drag to the upper left corner. You should have a gradient covering the entire document. To make the gradient appear only where the text is,

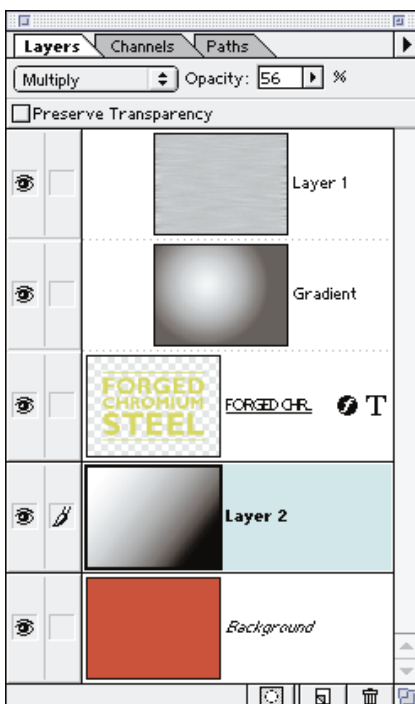


the settings for both the drop shadow and the 3-D effect.



When the angle of the light source pleases you, it's time to add lighting to the background—otherwise, it won't look realistic. So click on the bottom layer (the one that contains the solid color) and then click on the new layer icon at the bottom of the Layers palette.

Next, click on the Gradient tool and choose the first tool in the pop-out menu that appears. Reset your foreground and background settings by typing "D." Now click-drag across your image, starting in the direction that the drop shadow falls and dragging in the direction that the highlight of the text appears. Now let's combine that gradient with the solid color below by setting the pop-up menu at the top



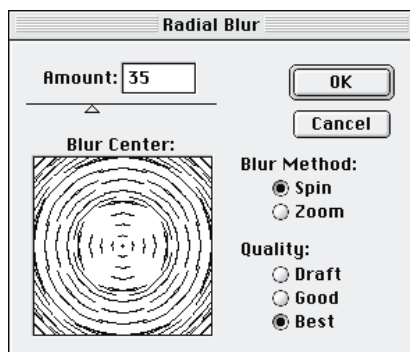
of the Layers palette to Multiply and then lowering the opacity of that layer until it looks appropriate.

We're finished with the 3-D type, but because we used clipping groups and layer effects, you can still double-click on the Type layer, change the text, and the effect will update immediately!

Drilling Holes

Now let's add some cool indentations that look like holes drilled into a metal surface. Start by clicking on the layer that contains the last gradient you made, then click on the new layer icon at the bottom of the Layers palette. Next, click-hold on the Marquee tool (upper left in tool box) and choose the Elliptical Marquee. Go to one of the corners of the image and click-drag to create a circular selection about the size of the tip of your pinky (hold down shift to constrain the selection to a circle).

Now let's attempt to turn the circle into a drilled hole. Start by choosing Edit>Fill and choose White as the Contents setting (again, make sure the Preserve Transparency checkbox is turned off). Next we'll need some random info to distort, so choose Filter>Noise>Add Noise and use the default settings (which will be the last ones we used). Then choose Filter>Blur>Radial Blur, set Amount to at least 35, and use the Spin setting.



Next we'll add a special gradient to help simulate lighting. Click on the Gradient tool and this time select Angle Gradient. Double-click the Gradient tool to open its palette of options, and choose Black, White from the pop-up menu. Now click the Edit button and do the following: Click on the white square on the far right of the gradient bar and type 25% in the location text field. Now hold down the option/alt key and drag the white square to the right—this will create a duplicate. To position this square in the correct location, enter 75% in the location field. Now option-drag the black square to duplicate it and enter 100% in the location field. You should end up with something that looks like the dialog box below.

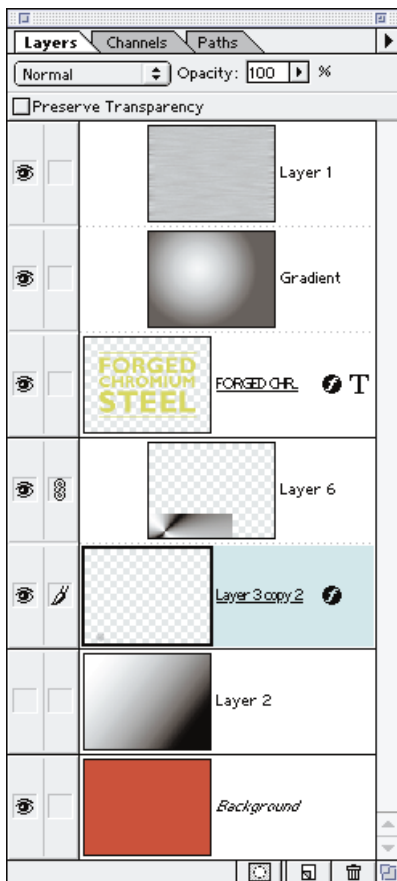


Now create a new layer above the layer that contains the circular object you made earlier. Choose Select>Deselect and click in the center of the circle. Drag until the cursor is at the upper right edge of the circle. Combine the gradient with the circle by choosing Layer>Group with Previous and then changing the pop-up menu at the top of the Layers palette to Hard Light. You can also lower the opacity to let more of the circle texture show through.



One final touch—let's add an edge that will make the circle appear to be an indentation in the surface of the background. Click on the layer that contains the circle, choose Layer>Effects>Bevel and Emboss and Inner Bevel as the Style setting. For this article, I used the following settings: Highlight Opacity=40%, Shadow Opacity=87%, Angle=138°, Depth=7, Blur=5, and I chose the Down setting.

When everything looks good, it would be nice to simplify the contents of the Layers palette because it is most likely looking a bit busy.



First, click on the layer that contains the gradient above the solid colored background and choose Merge Down from the side menu of the Layers palette. Click on the layer that contains the gradient above the circle and merge it down as well. If you want to combine the text effects layers together, you'll

first need to click on the layer that contains the text and choose Layer>Type>Render Layer (but be warned, after applying that command, you will no longer be able to edit the text), then you can click on the layer above the text and merge it down and do the same thing to the layer above that one.



Dimensional Paint

Now that we're finished with our fancy type effect, I'll throw in a

quick layer effects tip that allows you to paint with dimension.

Open any color photograph and create a new empty layer above the image. Next, choose Layer>Effects>Bevel and Emboss, and enter the settings shown in the dialog box below.



Nothing will show up on the main screen because the layer is still empty. Now set the pop-up menu at the top of the layer to Hard Light and then paint with a medium gray—go ahead and try it.

Manfrotto®

For those who demand more from their camera,
contact us or visit our web site.

Bogen Tripods
are now branded under
the manufacturer's name...
Manfrotto

Exclusively **bogen**

Bogen Photo Corp., 565 East Crescent Avenue, Ramsey, NJ 07446-0506
(201) 818-8800 • Fax: (201) 818-8177 • e-mail: info@bogenphoto.com • web: www.bogenphoto.com

Subscribe to PEI Magazine!

Fill this in on our web site: www.peimag.com

-Or fax-mail today 404.614.6406!

-Or call us 1.800.786.6277x257

PEI (ISSN: 1060-4936) is published monthly for \$20.00 U.S.; \$33 Canada; \$50 International per year

(Single copies including postage and handling \$4, U.S. and Canada; \$5, International). Back issues are \$4 U.S., \$6 Canadian, and \$10 International.

***Prices Subject to Change.**

Please allow 6 to 8 weeks for delivery of first issue.

Last name:

First name:

Company:

Street:

City: State/Province:

ZIP/Postal Code: Country:

Phone:

Email:

Yes! Sign me up for a one year subscription to PEI for:

US \$20.00•Canada \$33.00•International \$50.00

Charge my subscription to:

Payment: Visa•America Express•MasterCard or

Check (Checks must be mailed to PPA in U.S. Funds with a copy of this form)

Credit card number:

Exp. Date

Name on card if different from subscriber name:

Zip/Postal Code if different from subscriber:

--It is important that you provide the following information:--

Please check ONE that describes the primary activity of your organization:

- _60 Corporate Photography/Imaging Studio 66 Advertising Agency
- _61 Independent Photography Imaging Studio 67 Multimedia Services
- _62 Publishing 68 Commercial Printing
- _63 Computer Graphics Studio 69 Education/Training
- _64 Prepress Services 70 Government
- _65 Service Bureau/Lab 71 Dealer/Distributor/VAR
- _Other 72 :

Please check ONE category that best describes your title:

- _A Owner/Partner/President
- _Vice President/General Manager F Prepress Manager
- _B Graphic Designer/Illustrator G Multimedia Producer
- _C Photographer H Communications, Marketing Director
- _D Digital Imager I Consultant/Systems Integrator
- _E Creative Services Manger/Art Director
- _Other J :